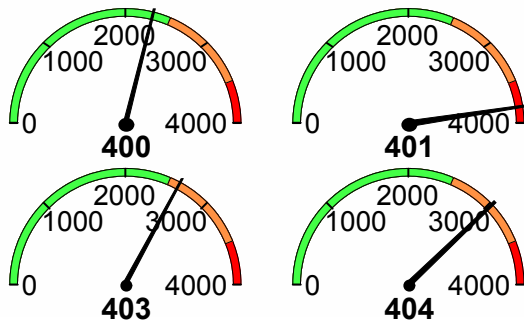
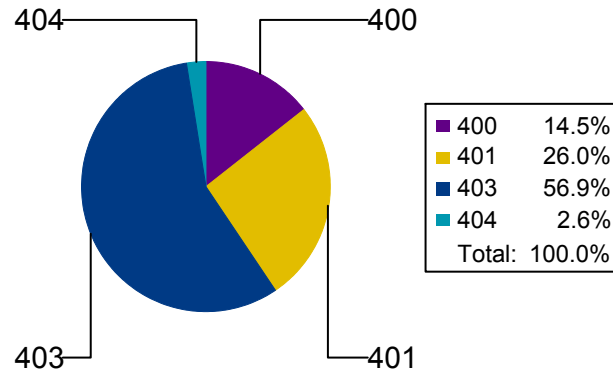


# Management Dashboard

Average Response Time by BIN  
(msec)



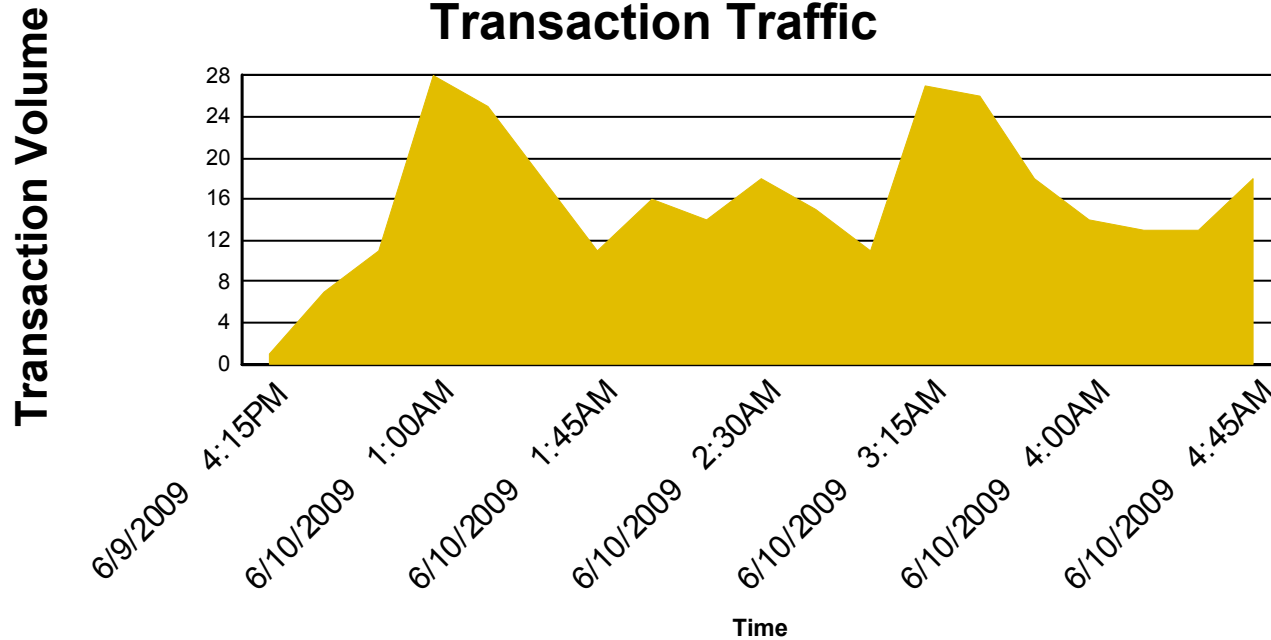
Transaction Breakdown by BIN



Top 5 Busiest Transaction Periods  
(15-minute periods)

Period	Number of Transactions
6/10/2009 1:00AM	28
6/10/2009 3:15AM	27
6/10/2009 3:30AM	26
6/10/2009 1:15AM	25
6/10/2009 1:30AM	18

**Transaction Traffic**



Top 5 Slowest Transaction Periods  
(15-minute periods)

Period	Average Duration (msec)
6/10/2009 1:45AM	4,400.64
6/10/2009 4:30AM	4,241.46
6/10/2009 4:00AM	3,987.64
6/10/2009 2:15AM	3,838.14
6/10/2009 1:00AM	3,827.57